

Tudor Gatehouse at Bramshott Place Listed Grade II

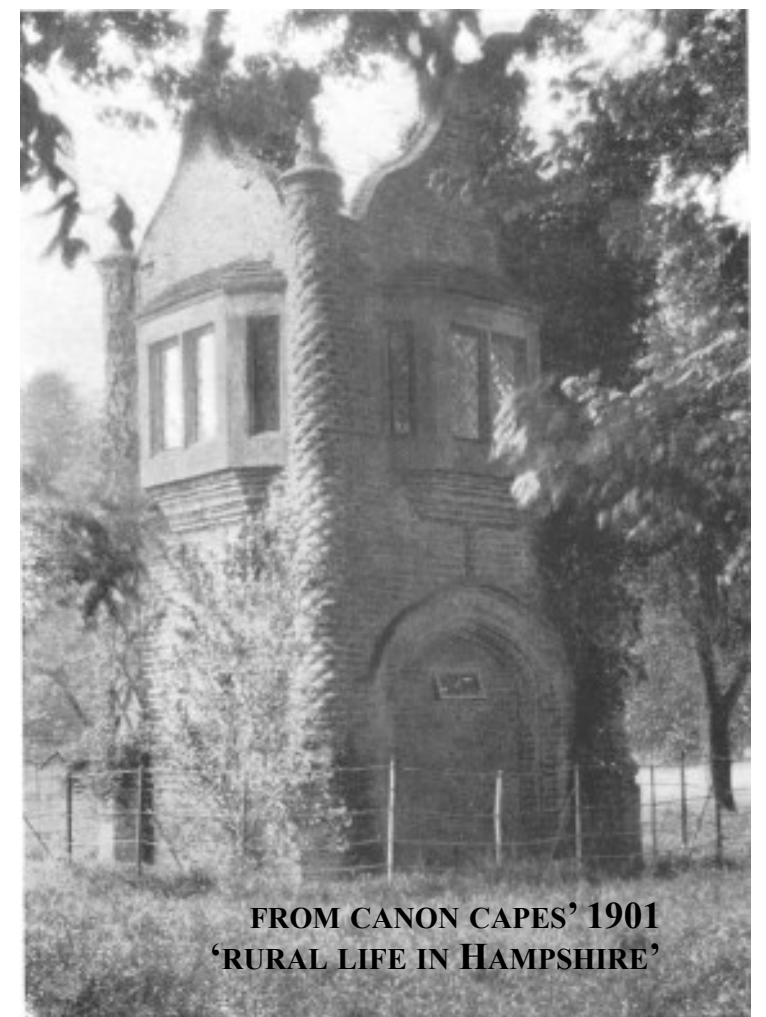


A gazebo above a gateway, probably to a walled garden which has disappeared. Early C16. A two-storeyed square structure, with walls of brickwork in English bond; there are round buttresses to the corners, having cut-brick decoration in the form of lozenges (or diagonal raised network) to the south side, and rounded projections (or diagonal grooved network) to the north, all resting on octagonal moulded bases, the heads having round cap mouldings with finials (repaired in cement). The top of each wall is a gable of ogee form with a more elaborate finial, and roof is hidden. The north elevation has a wide Tudor arch, with hoodmould and several orders of classical mouldings in cut brickworks: above is an oriel with a tiled roof, and a receding base of brick mouldings. The south side has a smaller, but similar archway and above it a Tudor style c19 window. The east wall has an oriel similar to that at the front and the west a small casement window. Inside the gateway, there are recesses in the east and west walls:

The gatehouse is the only surviving fragment of John Hooke's mansion of about 1580. The house survived—in part—until Sir William Erle bought the site in 1850 when (apart from the Gatehouse) it was demolished and replaced by a more compact Bramshott Grange. The Gatehouse is the only example of 'manorial' Elizabethan architecture in the parish.



PRESENT DAY VIEW OF INSIDE OF THE



FROM CANON CAPES' 1901
'RURAL LIFE IN HAMPSHIRE'

*In the file which accompanies this series, there is a picture of a property in **Dorset** which retains the complete outer wall, including a gatehouse similar to the one at Bramshott Chase*