

# Chiltlee Manor

Listed Grade II

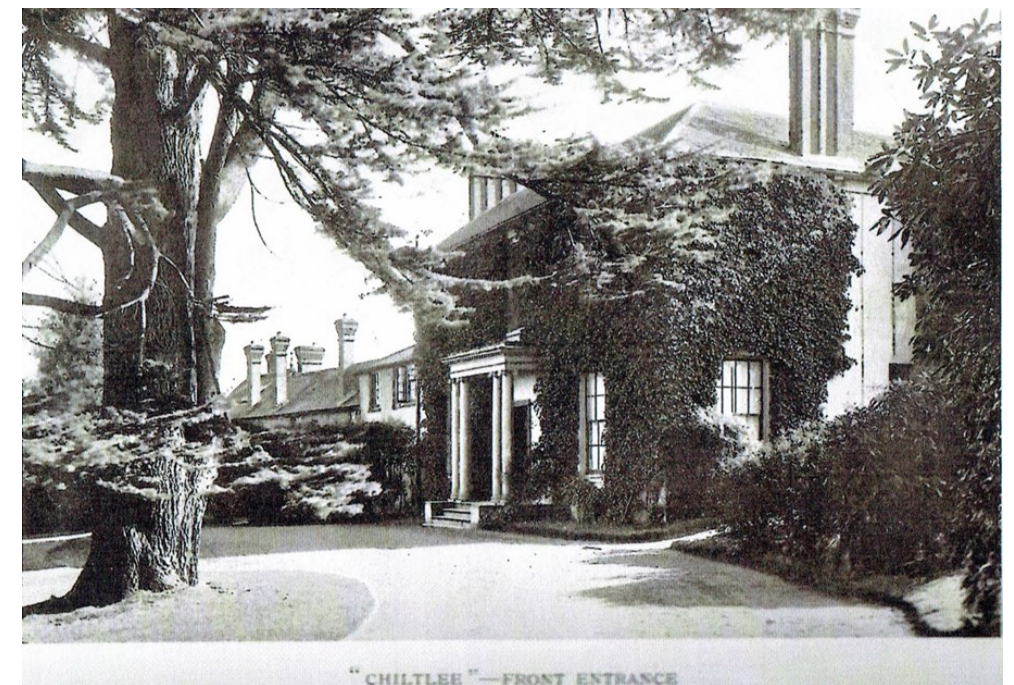
*House, now offices. Early and mid c19, with C20 restoration. Rendered walls to the front, with plain eaves fascia and plinth: other rear walls are ironstone with brick flat and cambered arches. Hipped slate roof. The main block has had a substantial rear extension of the mid c19, and there is a lower service wing to the east: also additions of 3 storeys to the rear. North front symmetrical of 2 storeys, 3 windows, with a low 2-storeyed service wing at the east side. Sashes in reveals. Porch on 3 steps, with reeded architrave and 6-panelled door, with a large mid c19 open porch with coupled columns in an Ionic Order. The rear has 2 unequal 2-storeyed bays, 3.2.3-1 windows, sashes in reveals, and a C20 glazed porch.*

After an illustrious history Chiltlee Manor was sold to Lt Col Wicknam Chappell from whom the house was requisitioned by the Military authorities during WW2. It became the Officers mess for the 37th Regiment, Royal Engineers. The house fell into disrepair and was bought by Peak Housing and developed the building and the site.

*Interior: original plain staircase, some panelled doors in architraves, and*



ABOVE REAR VIEW



RIGHT CIRCA 1900